



# ACCURATE DISCOUNT CHAIN STORE INVENTORY

**Case Study:** Retail Inventory – Japanese Discount Chain

A Japanese discount chain needed a solution to have all the **retail stores stock counted** with a minimum of 99% accuracy



# ACCURATE DISCOUNT CHAIN STORE INVENTORY

## Case Study: Retail Inventory – Japanese Discount Chain

A Japanese discount chain store that carries a wide range of products required the support of RGIS. The discount chain sells home electrical appliances, miscellaneous household goods, food, watches, fashion-related merchandise, sporting goods, leisure products and other items by the concept of 'great convenience and discount stores'. With 322 stores covering Japan, Singapore, Hawaii, Thailand, Hong Kong and Malaysia.



### REQUIREMENT

The discount chain wanted to have all **retail stores stock counted with a minimum of 99% accuracy**, so required RGIS to provide the following:

- **Seven stores** to be counted
- Accuracy at a minimum of **99% at all stores**
- Ensure **no disruption to store staff or customers**
- Give **consistent reporting** across all stores



### SOLUTION

The discount chain partnered with RGIS to complete the **accurate stocktake project**, and provided the following:

- Allocated multiple **experienced RGIS auditors** for each store
- **Supported all stores** to prepare for the counts to **increase efficiency**
- **Second level quantity check for 20%** of all stores to **ensure accuracy**
- Completed stock counts **out of hours**



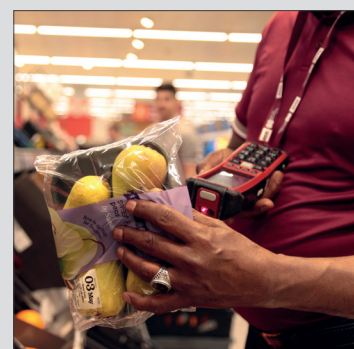
### RESULTS

The discount chain found by outsourcing the **accurate stocktake project** to RGIS, the following results were achieved:

- Counted a total of **1,500,000 items** across seven stores
- **99.7% accuracy achieved** across all stores
- Due to the counts being conducted out of hours, there was **no disruption to staff or customers**



By partnering with RGIS, the discount chain found that 1,500,000 items were **accurately counted with 99.7% accuracy** across all stores



© 2020 RGIS.  
All rights reserved. RGIS\_CS\_0123\_01

Stock Count



Accurate Reports



Out of Hours



Accuracy of

**99.7%**  
Achieved

CONTACT **RGIS** TODAY TO SEE HOW WE CAN HELP YOU